

# Global Summer Programme 2026

(11th Edition)

Session 1: 29 June - 24 July 2026  
Session 2: 13 July - 7 August 2026



# SMU IS GLOBAL

The Singapore Management University is internationally recognised for its world-class research and teaching excellence.

Established in 2000, SMU is known for its highly interactive, collaborative and project-based approach to learning, and for its emphasis on generating rigorous and high-impact, and multi-and interdisciplinary research that addresses Asian issues of global relevance.

Home to more than 13,000 students, SMU comprises eight schools specialising in Accountancy, Business, Economics, Computing and Information Systems, Law, Social Sciences, Integrative Studies and Graduate Research Studies, offering a wide range of bachelor's, master's and PhD degree programmes.



The College of Integrative Studies and College of Graduate Research Studies also facilitate the development of interdisciplinary programmes across schools to prepare our students to face the challenges of a complex world.

**1st** In the World

for Citation Rankings, Archival Research for All Topics and Archival Research for Financial Accounting awarded to SMU School of Accountancy

by *BYU Accounting Research Rankings 2022*

**3rd** In the World

for Masters in Finance Post-experience awarded to SMUMSc in Wealth Management

by *Financial Times Business School Rankings 2022*

**2nd** Globally

in Software Engineering

by *CSRankings 2023*

**1st** SG University

to achieve AAHRPP accreditation

by *Association for the Accreditation of Human Research Protection Programs 2018*

**2nd** In Asia

for Masters of IT in Business

by *Quacquarelli Symonds (QS) Business Masters Rankings 2025*

**15th** Worldwide

amongst Specialist Universities

derived from *Quacquarelli Symonds (QS) World University Rankings 2026*



# GSP 2025 PARTICIPANTS' TESTIMONIALS



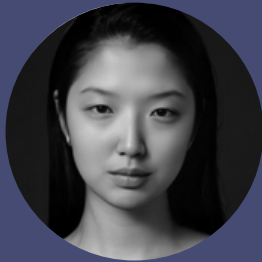
**ChengEn Yeh -  
*National Taiwan  
University***

From fun adventures like archery and Ang Ku Kueh making, to warm-hearted professors and international teamwork, GSP 2025 gave me memories and friendships I'll always treasure.



**Ksenia Vibe -  
*Humboldt  
Universität zu  
Berlin***

GSP 2025 was more than a summer programme - it was a global journey of learning, connection, and growth. From diverse perspectives to lifelong friendships, it was an unforgettable chapter of inspiration and discovery.



**Mun Kristina Aleksandrovna -  
*Vienna University of Business  
and Economics***

GSP 2025 was a journey of growth, connection, and challenge; an experience that expanded my horizons and left me inspired for what's next.



**Siriprapa Sriprasert -  
*Chulalongkorn University***

A truly well-spent summer, where I gained both valuable academic knowledge and lasting international connections.



**Thomas Kydland Gundersen -  
*BI Norwegian Business School***

Connecting with inspiring minds from around the world - learning, growing, and building lifelong friendships at SMU this summer.



# GSP 2026 COURSES



3

Tracks

20+

Courses

3

Interactive  
classes per  
week per  
course

36

Contact  
hours per  
course

## ASIAN INSIGHTS

01

### The world's fastest growing economic region

Asia is a dynamic region that is home to culturally diverse societies at varying stages of transformation. As a cosmopolitan city state with a thriving entrepreneurship and innovation scene, Singapore offers myriad opportunities for all.

## DIGITAL INTELLIGENCE

02

### Adapt and excel in our current ever-evolving digital landscape

Digital intelligence enables individuals and organisations to adeptly navigate the digital landscape, empowering them to harness technology effectively for success, especially in today's interconnected world.

## SUSTAINABLE FUTURES

03

### Building sustainable futures for the generations to come

Sustainability is multifaceted and applicable to social and economic domains such as environmental conservation and business practices. As one of the world's top financial hubs and greenest cities, Singapore is an ideal platform to explore this topic.



# TRACK & COURSE LIST

## Session 1:

29 June - 24 July 2026



### ASIAN INSIGHTS

[Arts Entrepreneurship and Public Engagement in Southeast Asia](#)

[Asia Pacific Business](#)

[Designing Communication for Behavioural Change](#)

[Economic Globalisation and Asia](#)

## Session 2:

13 July - 7 August 2026



### ASIAN INSIGHTS

[Arts Entrepreneurship and Public Engagement in Southeast Asia](#)

[Asia Pacific Business](#)

[Entrepreneurial Finance](#)

[Entrepreneurship and Business Creation](#)

[Group Dynamics in Organisations](#)

[Managing Customer Relations with Analytics: Asian Insights](#)



### DIGITAL INTELLIGENCE

[Artificial Intelligence for Social Transformation](#)

[Business Data Management](#)

[Internet of Things: Innovations for Driving Business Growth](#)



### DIGITAL INTELLIGENCE

[Doing Business with Artificial Intelligence](#)

[Managing Strategic Change and Digital Transformation](#)

[Programming for Business Analytics\\*](#)

[Quantum Computing in Financial Services](#)

[Statistical Learning\\*](#)



### SUSTAINABLE FUTURES

[Digital Technologies for Environmental Sustainability](#)

[Innovation for Asia's Smart Cities](#)

[Sustainable Entrepreneurship](#)

[The Business of Fun: Developing Sustainable Tourism Destinations through Interdisciplinarity](#)



### SUSTAINABLE FUTURES

[Digital Technologies for Environmental Sustainability](#)

[Sustainability Law in Business Practice](#)

[The Business of Fun: Developing Sustainable Tourism Destinations through Interdisciplinarity](#)

# COSY ACCOMMODATION

## Hotel:

HOTEL MI

IBIS BUDGET

KINN CAPSULES / KINN HABITAT

LYF FUNAN / FARRER PARK

V HOTEL

WINK.SG

## Room Price:

SGD80++ onwards,  
per night

Price quoted is in Singapore Dollars (SGD) and excludes 10% Service Charge and prevailing Goods and Services Tax (GST).

Hotels are not affiliated with Singapore Management University; listing is for reference only. Price quoted above is subject to change.



# MUST-VISIT PLACES IN SINGAPORE



## Chinatown

Nestled in Singapore, Chinatown is a bustling district rich in cultural heritage, featuring ornate temples and diverse cuisine. Explore heritage sites, shop for unique souvenirs, and savour delicious Chinese dishes in this vibrant neighborhood.



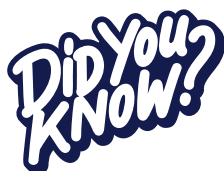
## Kampong Glam

Kampong Glam is a historic district in Singapore celebrating Malay and Arab heritage. Known for vibrant street art, stunning mosques, and trendy boutiques, it offers a mix of culture, cuisine, and shopping, especially along Haji Lane.



## Little India

Little India is a vibrant district in Singapore known for its colorful streets, aromatic spices, and rich Indian culture. Explore ornate temples, savour authentic Indian cuisine, and shop for unique textiles in this lively area.



Singapore's hawker culture is on UNESCO's list of intangible cultural heritage! Enjoy a plate or bowl of delicious Hainanese Chicken Rice, Laksa, Nasi Lemak, Hokkien Prawn Noodle, and many more for around SGD5.





# INFORMATION FOR APPLICANTS

We welcome university students from all around the world.

## IN YOUR GSP APPLICATION, PLEASE INCLUDE THE FOLLOWING:

- Your latest academic transcript or official acceptance letter from your university.
- If English is not the main language of instruction at your university, please provide your IELTS or TOEFL test results (minimum score: 6.5 for IELTS or 90 for TOEFL iBT), taken within two years at the point of application.

## PROGRAMME FEES\*:

<b>Application:</b>	SGD150
<b>Miscellaneous:</b>	SGD230
<b>Tuition:</b>	SGD3,270 for one course SGD5,450 for two courses

\* All fees are quoted in Singapore Dollars (SGD) and include Singapore's prevailing Goods and Services Tax.

Programme fees do not cover other costs, such as accommodation, travel, visa, etc.

\* Upon acceptance of our offer of admission to the programme, non-SMU students are required to make an advance payment of SGD1,000 (as part of the tuition fee).

\* Terms & conditions apply.

## APPLY FOR GSP 2026 NOW

Application period: 10 January to 15 April 2026  
(Singapore Standard Time, GMT+8)

**Early Bird Special:** For non-nominated (fee-paying) students, complete your application and payment by 28 February 2026 to get a ticket to Universal Studios Singapore!

<While spots last | Terms & conditions apply | Subject to change>

Join our  
Mailing List



Email Us  
smusummer@smu.edu.sg



Follow Us  
@sgsmu.geo




<https://geo.smu.edu.sg/study-in-smu/global-summer-programme>





**SMU CENTRE FOR GLOBAL EDUCATION AND OPPORTUNITIES**

Singapore Management University  
Administration Building 81 Victoria Street Singapore 188065

 <https://geo.smu.edu.sg/study-in-smu/global-summer-programme>

 [smusummer@smu.edu.sg](mailto:smusummer@smu.edu.sg)